

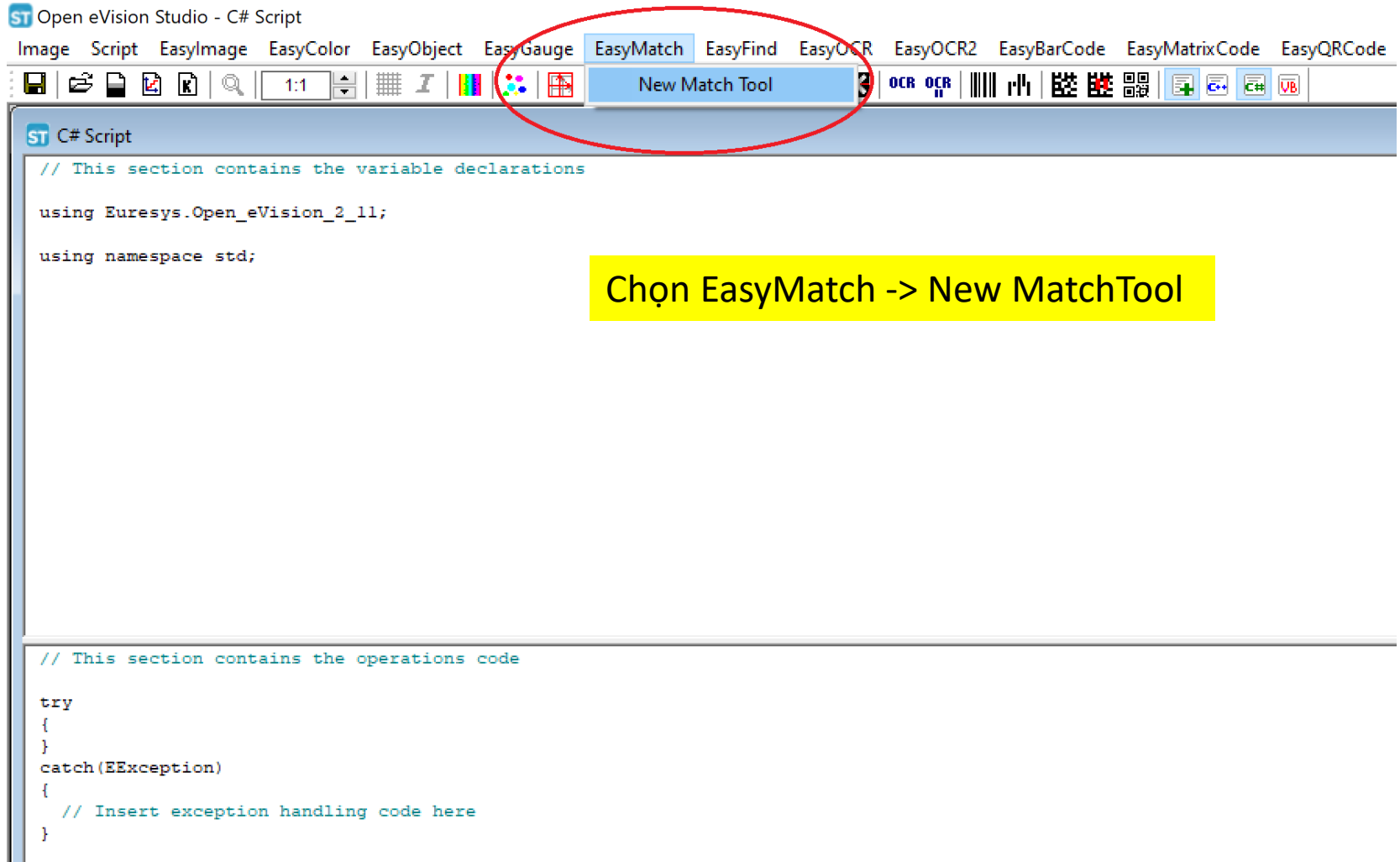
Sử dụng Open eVision

Machine **Imagination** Technologies

<http://mitech.jp/>

Last updated: 2020/10/21 11:54

Mở Open eVision Studio



The screenshot shows the Open eVision Studio application window. The title bar reads "ST Open eVision Studio - C# Script". The menu bar includes "Image", "Script", "EasyImage", "EasyColor", "EasyObject", "EasyGauge", "EasyMatch", "EasyFind", "EasyOCR", "EasyOCR2", "EasyBarCode", "EasyMatrixCode", and "EasyQRCode". The "EasyMatch" menu is open, and the "New Match Tool" option is highlighted. A red circle is drawn around the "EasyMatch" menu and the "New Match Tool" option. Below the menu bar, there is a toolbar with various icons. The main editor area displays C# code with the following content:

```
// This section contains the variable declarations

using Euresys.Open_eVision_2_11;

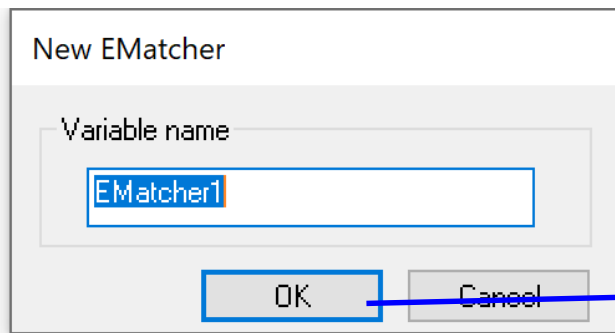
using namespace std;

// This section contains the operations code

try
{
}
catch(EException)
{
    // Insert exception handling code here
}
```

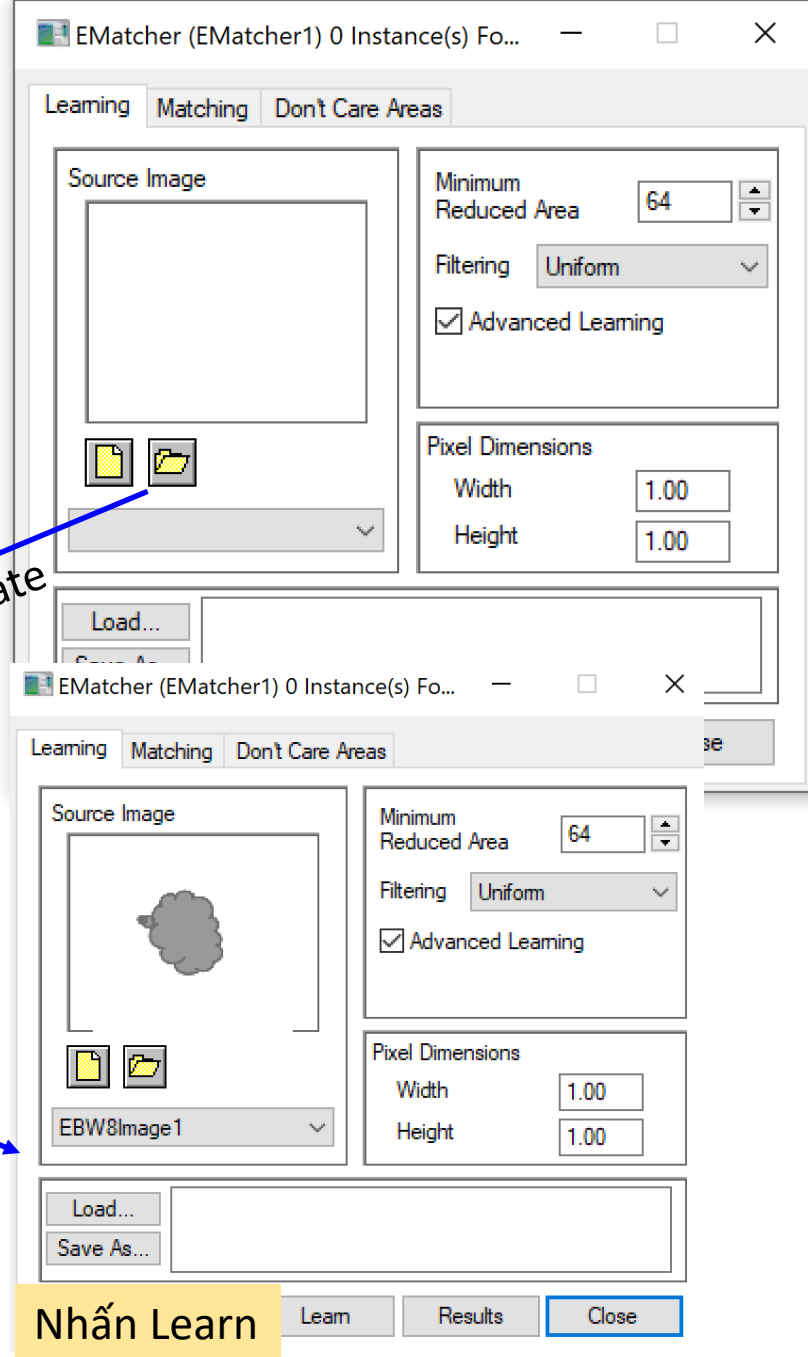
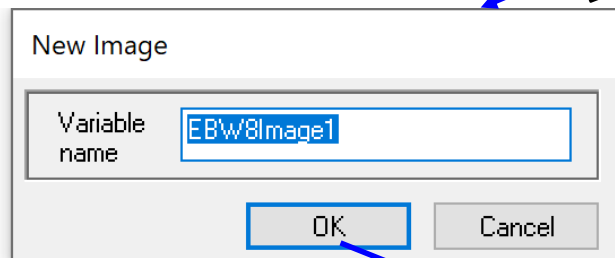
A yellow box with the text "Chọn EasyMatch -> New MatchTool" is overlaid on the code editor area.

Thử Matching



OK để tiếp

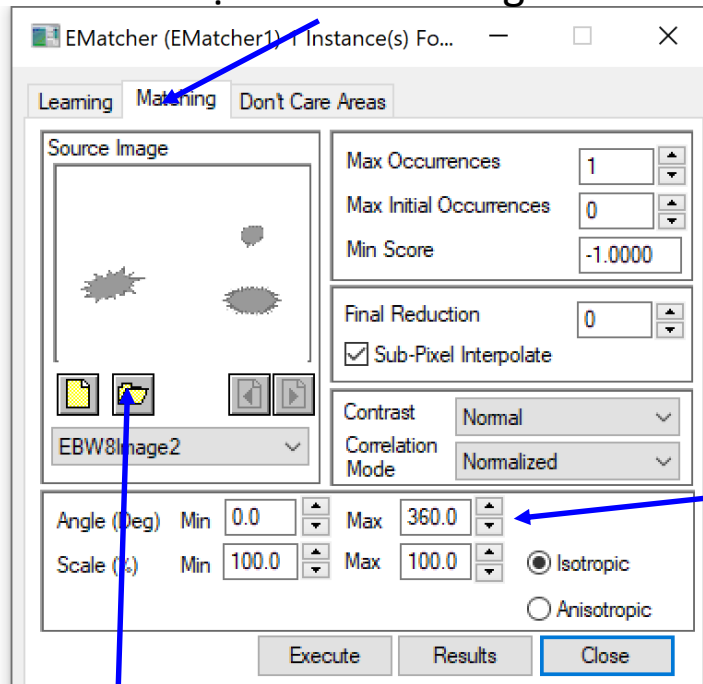
Browse Template



Nhấn Learn

Thử Matching

1. Chọn tab Matching

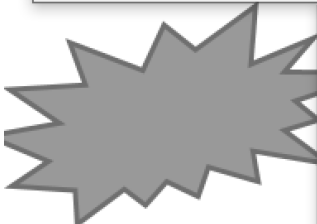
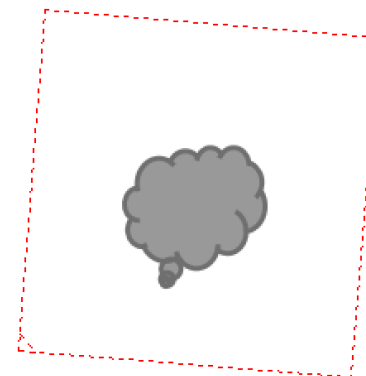
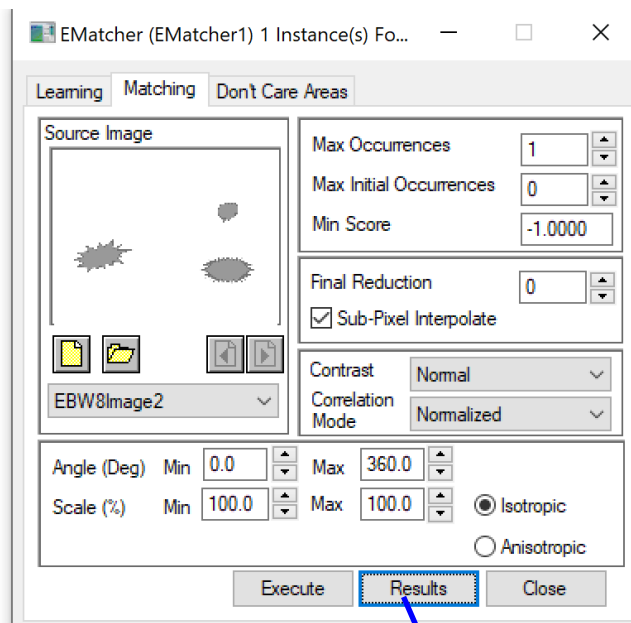


2. đặt góc 0 ~ 360

3. Chọn biểu tượng load ảnh

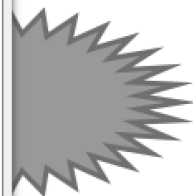
Thử Matching

Trên màn hình sẽ thấy kết quả



EMatcher1 - Instance(s) Found

Score	Center X	Center Y	Angle (Deg)	Scale X (%)	Scale Y (%)
0.99	726.14	246.71	274.93	100.00	100.00



Nhấn nút Execute

Thử Matching

ST C# Script

```
// This section contains the variable declarations

using Euresys.Open_eVision_2_11;

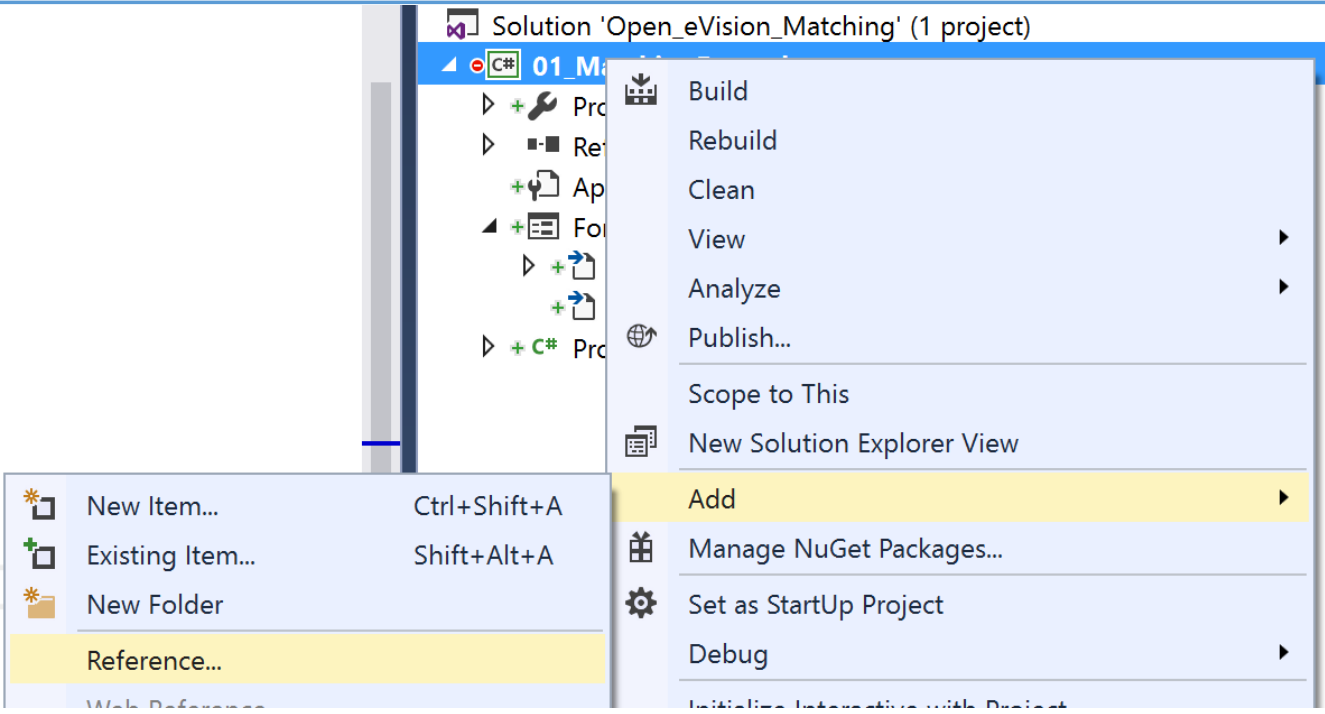
using namespace std;
EMatcher EMatcher1 = new EMatcher(); // EMatcher instance
EImageBW8 EBW8Image1 = new EImageBW8(); // EImageBW8 instance
EImageBW8 EBW8Image2 = new EImageBW8(); // EImageBW8 instance
```

Trên màn hình sẽ thấy C# script

```
// This section contains the operations code
```

```
try
{
    EBW8Image1.Load("(
\\01_MatchingExample\\img_in_8\\template.bmp");
    EMatcher1.MaxAngle = 360.00f;
    EMatcher1.MaxScale = 1.00f;
    EMatcher1.MinScale = 1.00f;
    EMatcher1.LearnPattern(EBW8Image1);
    EBW8Image2.Load("
\\01_MatchingExample\\img_in_8\\01.bmp");
    EMatcher1.Match(EBW8Image2);
}
catch(EException)
{
    // Insert exception handling code here
}
```

Bên C#, add reference



Chọn

C:\Program Files (x86)\Euresys\Open eVision 2.11\Bin32\Open_eVision_NetApi_2_11.dll